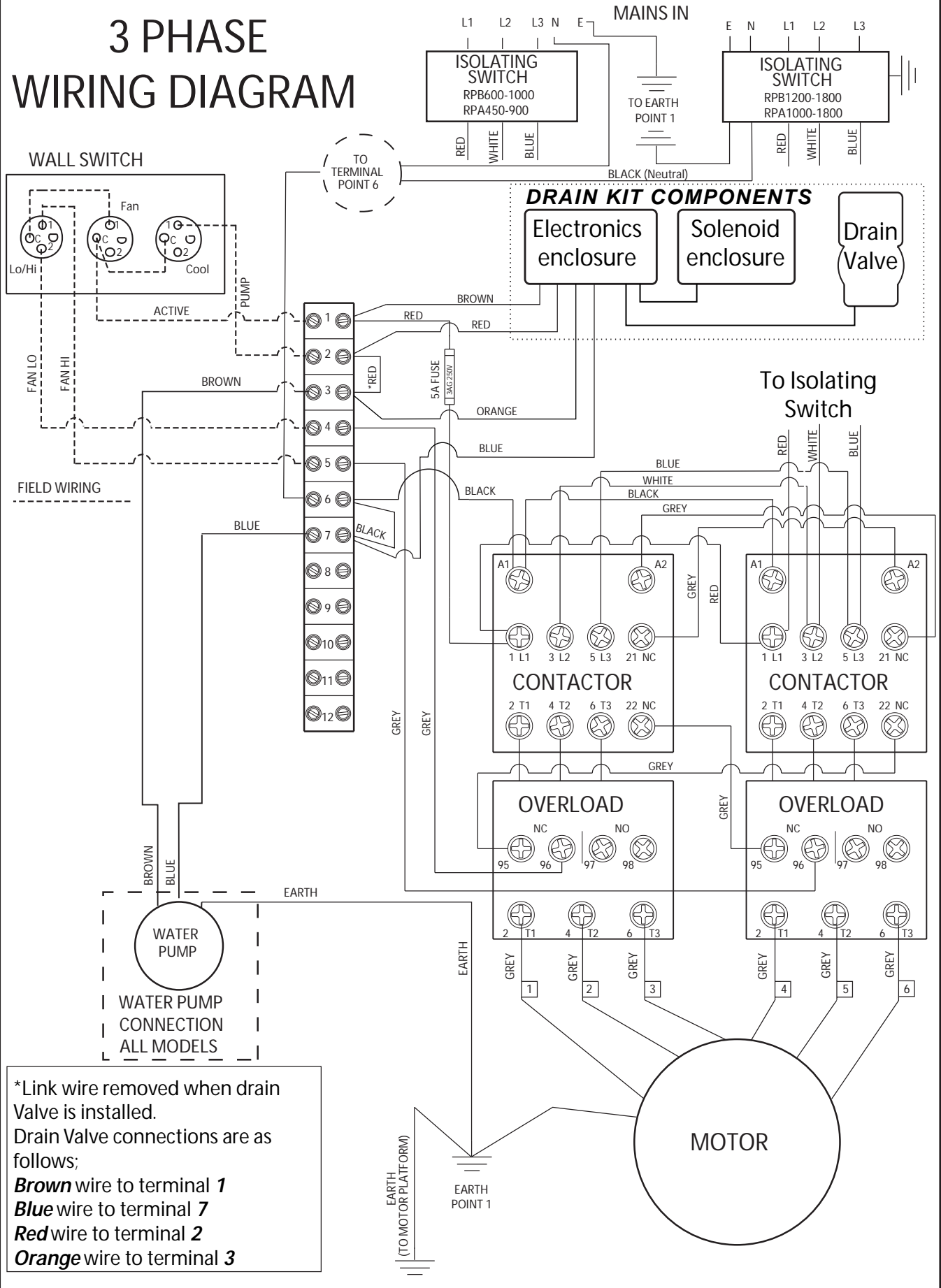


3 PHASE WIRING DIAGRAM

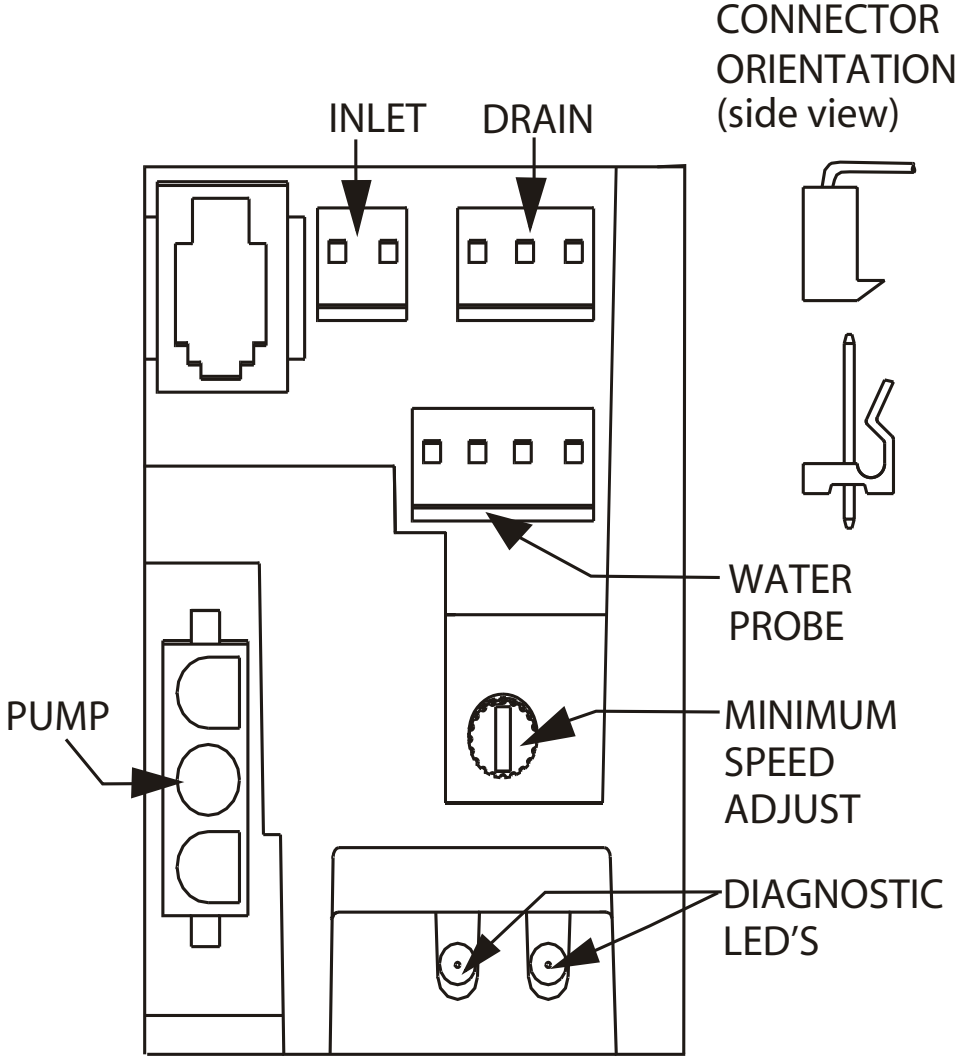


*Link wire removed when drain Valve is installed.
 Drain Valve connections are as follows;
Brown wire to terminal 1
Blue wire to terminal 7
Red wire to terminal 2
Orange wire to terminal 3

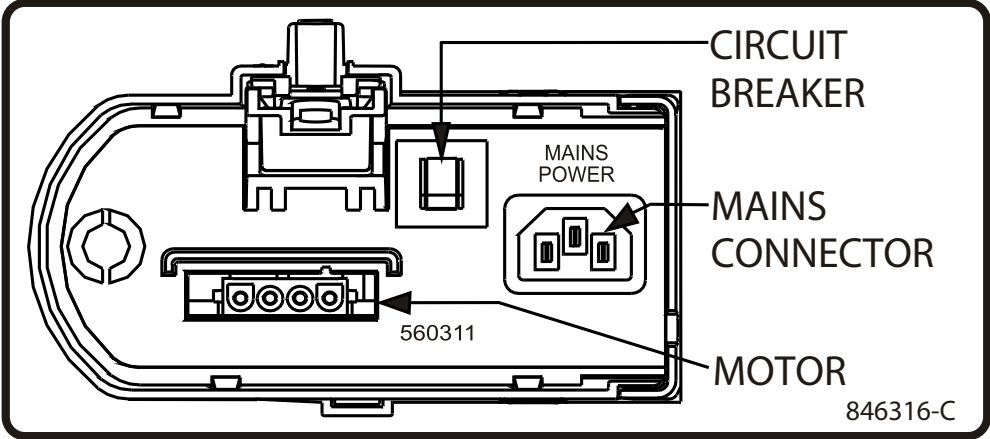
It is the policy of Seeley International to introduce continual product improvement. Accordingly, specifications are subject to change without notice. Please consult with your dealer to confirm the specifications of the model selected.

RPC Variable Speed Component Connections

WARNING: FAN MOTOR HAS AUTOMATIC RESET PROTECTION AND MAY RESTART WITHOUT WARNING. NO SERVICEABLE PARTS INSIDE - OPENING BOX WILL VOID WARRANTY. REMOVAL OF SPLASH COVER WILL VOID WARRANTY.



NOTE: SPLASH COVER NOT SHOWN FOR CLARITY.



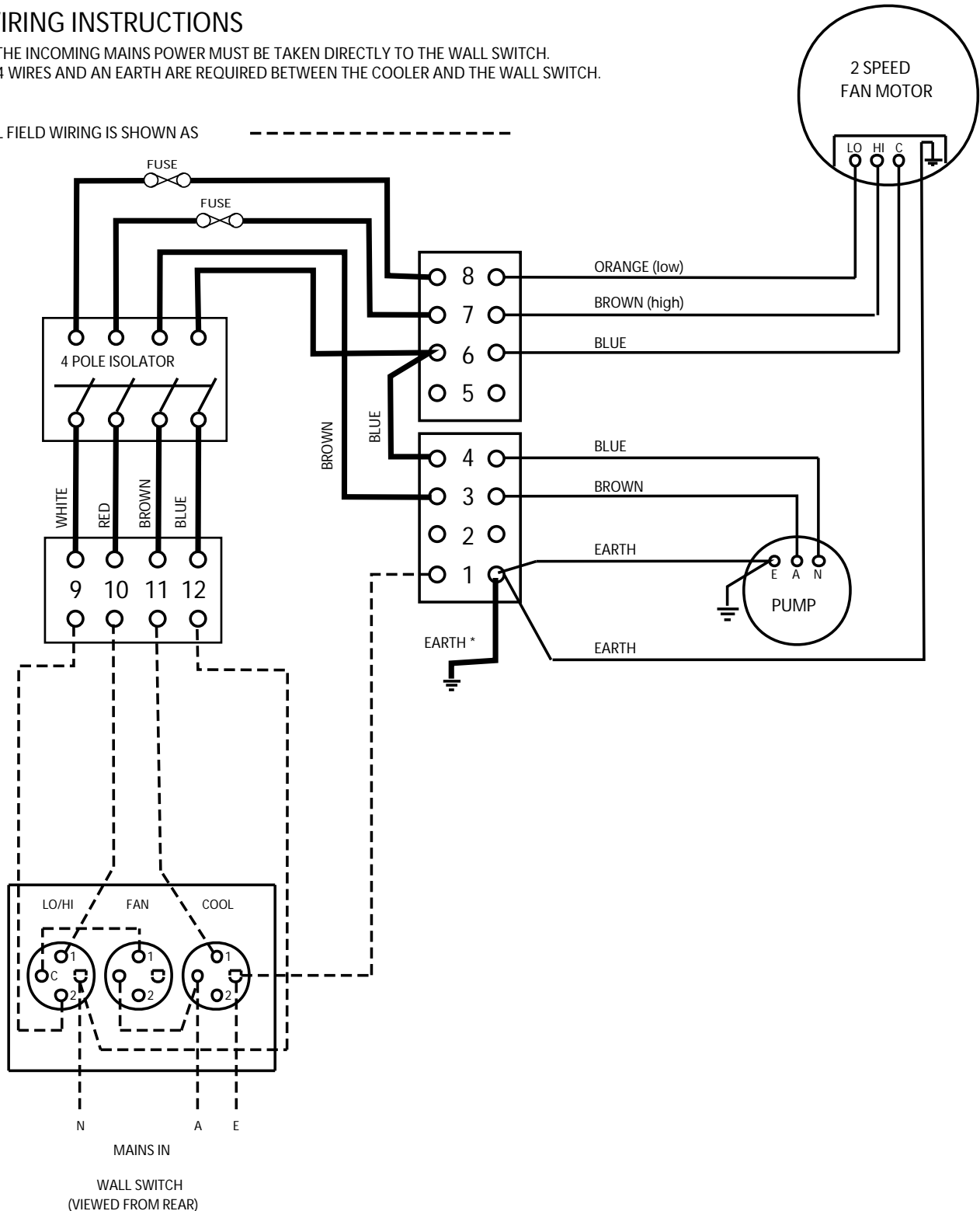
Commercial Wiring Diagram RPC 2 Speed 1 Phase

**THESE WIRING INSTRUCTIONS FOR UNITS MADE PRIOR TO JANUARY 2006
WHERE THE MAINS POWER IS SUPPLIED TO WALL SWITCH
TWO SPEED SINGLE PHASE RPC WIRING DIAGRAM
107196 ISOLATION BOX**

WIRING INSTRUCTIONS

1. THE INCOMING MAINS POWER MUST BE TAKEN DIRECTLY TO THE WALL SWITCH.
2. 4 WIRES AND AN EARTH ARE REQUIRED BETWEEN THE COOLER AND THE WALL SWITCH.

ALL FIELD WIRING IS SHOWN AS -----



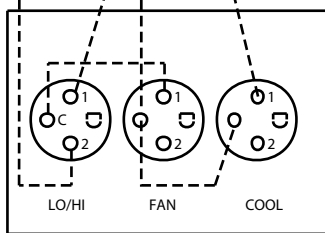
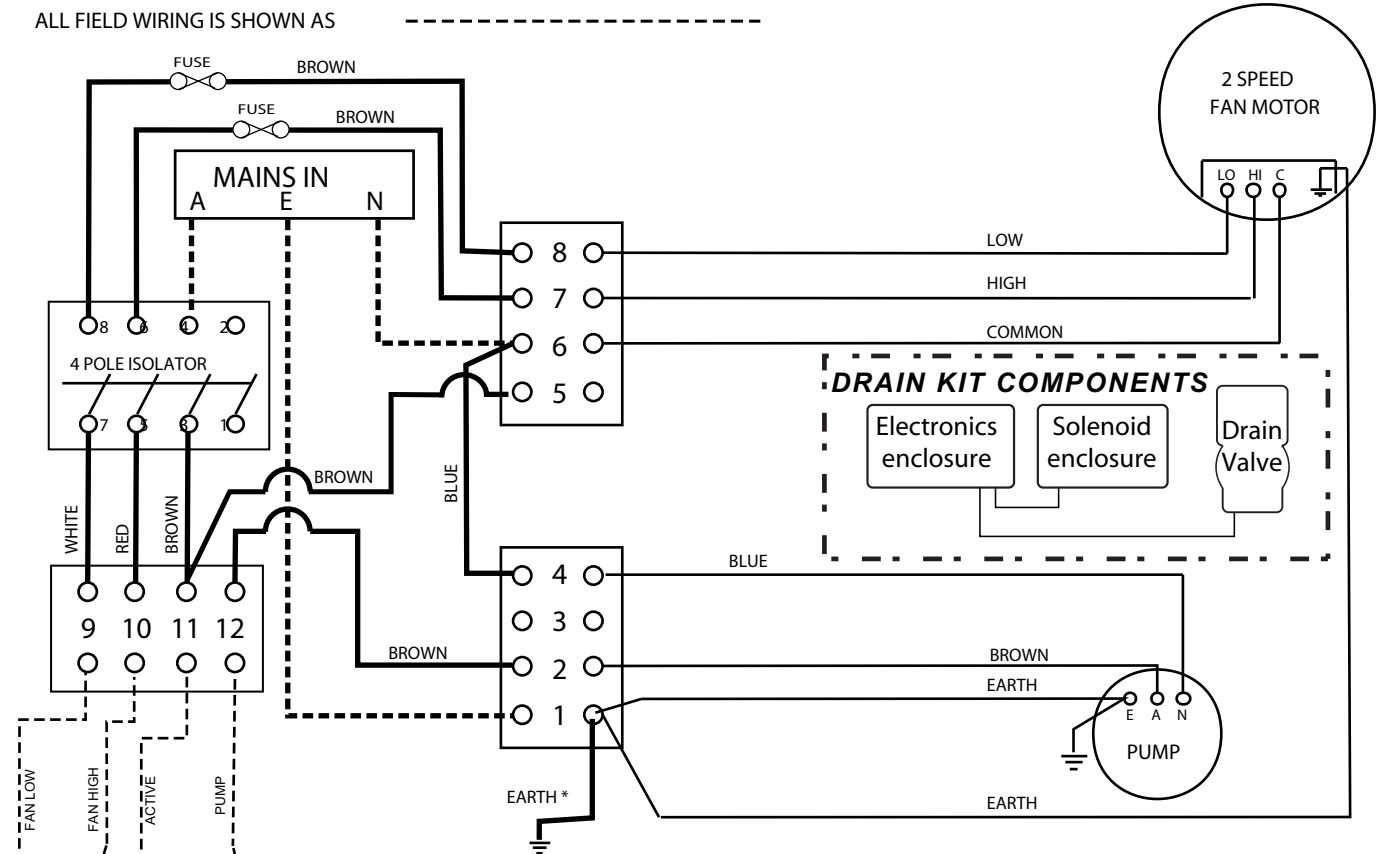
Commercial Wiring Diagram RPC 2 Speed 1 Phase

**THESE WIRING INSTRUCTIONS FOR UNITS MADE FROM JANUARY 2006
WHERE THE MAINS POWER IS SUPPLIED TO THE COOLER
TWO SPEED SINGLE PHASE WIRING DIAGRAM
107196 ISOLATION BOX**

WIRING INSTRUCTIONS

1. THE INCOMING MAINS POWER MUST BE TAKEN DIRECTLY TO THE COOLER.
2. 4 WIRES ARE REQUIRED BETWEEN THE COOLER AND THE WALL SWITCH.

ALL FIELD WIRING IS SHOWN AS -----



(VIEWED FROM REAR)

MOTOR TYPE	WIRE COLOURS		
	Common	High	Low
SEELEY	BLUE	BROWN	ORANGE

MODEL	Pump Size	Fan Motor Size
RPC250	JRM28	550/180 Watt
RPC320	JRM38	750/250 Watt
RPC400	JRM50	1100/330 Watt
RPC450	JRM50	1500/650 Watt

The 2 speed motors above can be reversed, contact Braemar Customer Service for details.

9610202 d

Commercial Wiring Diagram RPC 2 Speed 1 Phase

THESE WIRING INSTRUCTIONS FOR UNITS MADE PRIOR TO JANUARY 2006 WHERE THE MAINS POWER IS SUPPLIED TO WALL SWITCH

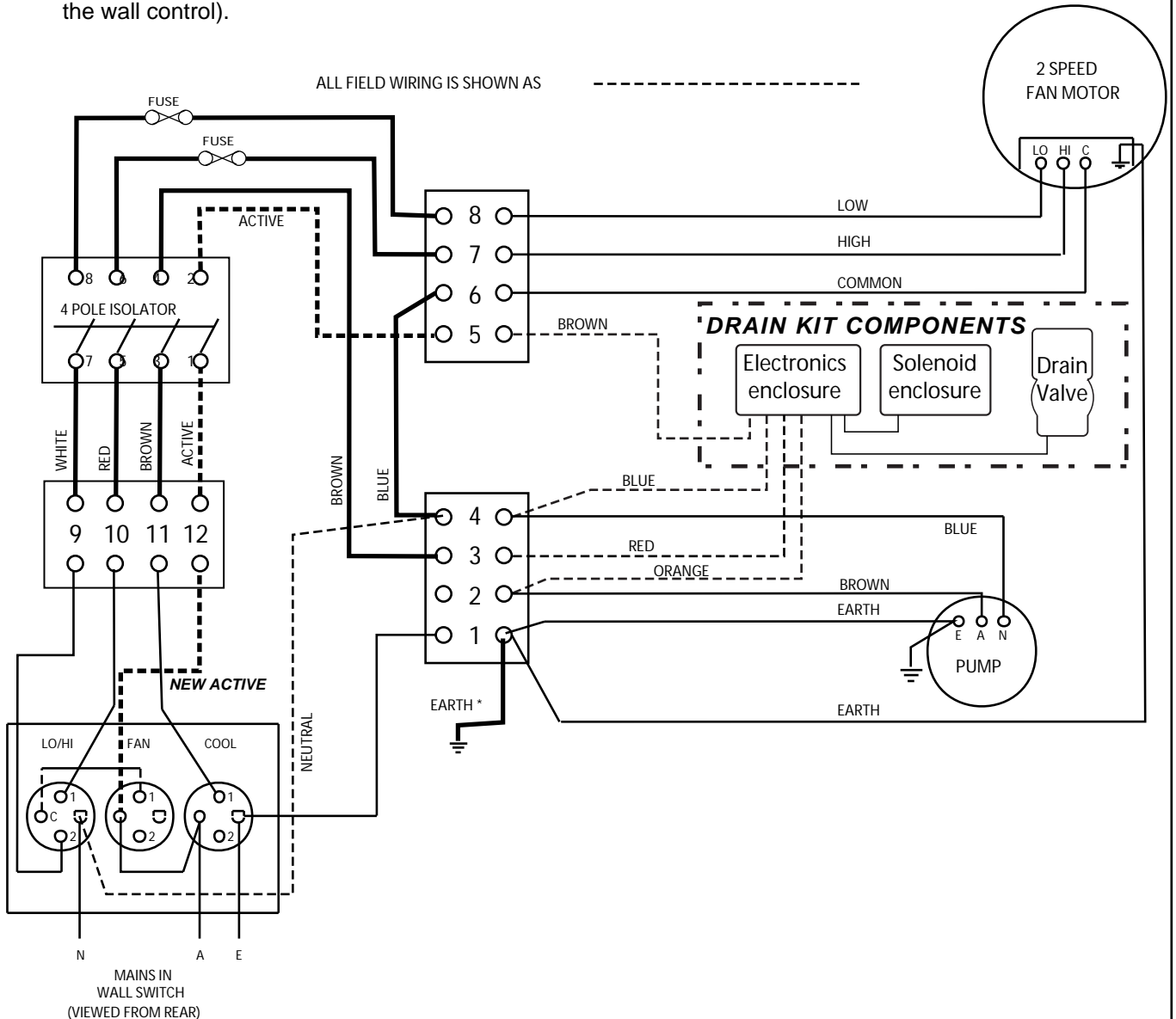
WIRING INSTRUCTIONS FOR DRAIN VALE INSTALLATION.

Firstly, make these changes to Isolation Box wiring;

1. Remove **NEUTRAL** wire (coming from the wall switch) from terminal point 12 and refit into terminal 4
2. Remove the **BLUE** wire between terminal point 12 and isolator point 1.
3. Remove the **BLUE** wire from isolator point 2 and terminal point 6. Leave the link between terminals 6 & 4.
4. Remove the **BROWN** wire from the pump and refit into terminal 2 along with the **ORANGE** wire from Electronics enclosure
5. Connect the **BROWN** wire from the Electronics enclosure to terminal point 5
6. Connect the **BLUE** wire from Electronics enclosure to terminal point 4
7. Connect the **RED** wire from the Electronics enclosure to terminal point 3.

Additional changes

8. Add an **ACTIVE** wire between isolator point 1 and terminal point 5.
9. Add an **ACTIVE** wire between isolator point 2 and terminal point 5.
10. **ADD A NEW ACTIVE** wire from terminal point 12 to the common terminal on the FAN switch. (At the wall control).



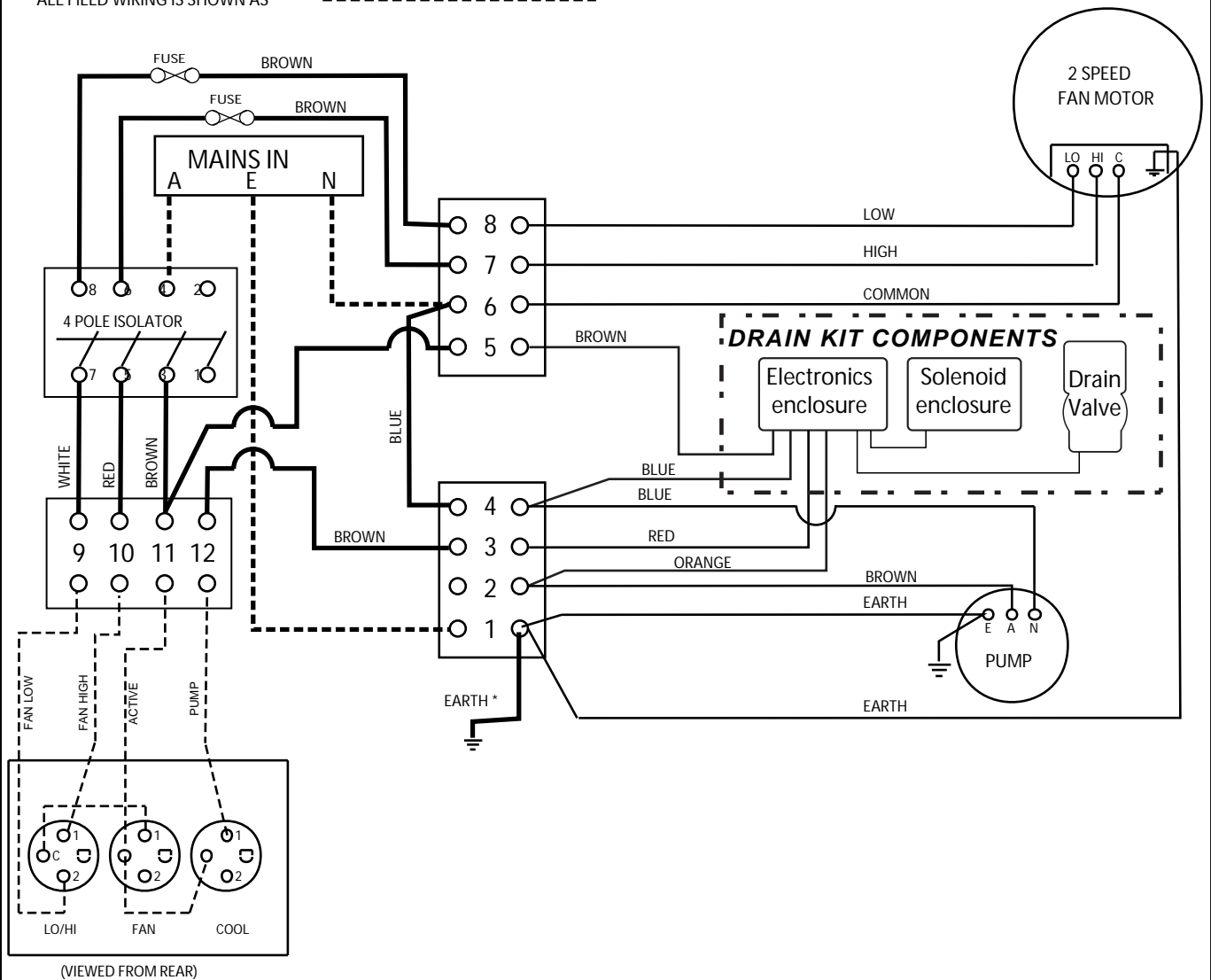
It is the policy of Seeley International to introduce continual product improvement. Accordingly, specifications are subject to change without notice. Please consult with your dealer to confirm the specifications of the model selected.

**THESE WIRING INSTRUCTIONS FOR UNITS MADE FROM JANUARY 2006
WHERE THE MAINS POWER IS SUPPLIED TO THE COOLER**

WIRING INSTRUCTIONS FOR DRAIN VALVE INSTALLATION.

1. Remove the **BROWN** wire from the terminal 2 and refit into terminal 3.
2. Connect the **BROWN** wire from the Electronics enclosure to terminal point 5
3. Connect the **BLUE** wire from Electronics enclosure to terminal point 4
4. Connect the **RED** wire from the Electronics enclosure to terminal point 3.
5. Connect the **ORANGE** wire to terminal point 2

ALL FIELD WIRING IS SHOWN AS -----



It is the policy of Seeley International to introduce continual product improvement. Accordingly, specifications are subject to change without notice. Please consult with your dealer to confirm the specifications of the model selected.